

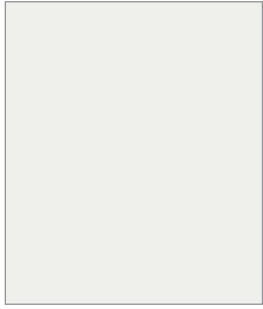


Fundamentals *by* FORMICA GROUP

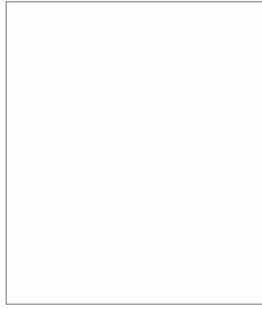
ESSENTIAL LAMINATE RANGE



Fundamentals by FORMICA GROUP



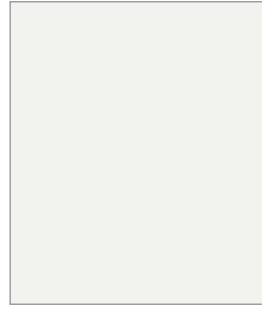
6464 Shell (SHL)
Signal White



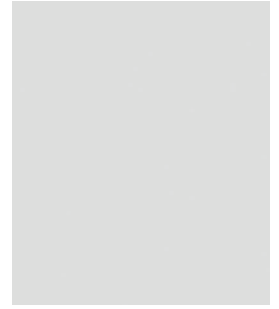
8100 Gloss (GLS)
White Gloss



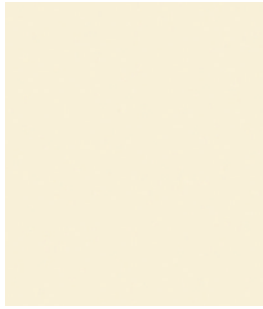
8100 Shell (SHL)
White



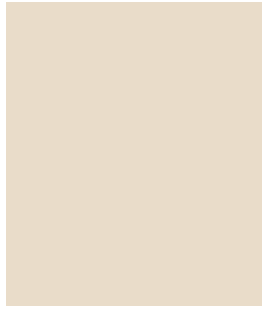
6463 Shell (SHL)
Sheer White



2301 Shell (SHL)
RN Grey



0527 Shell (SHL)
Buttermilk



6465 Shell (SHL)
Cotton



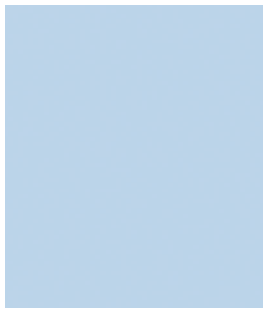
0536 Shell (SHL)
Muslin



6471 Shell (SHL)
Sunny Yellow



6472 Shell (SHL)
Rosso



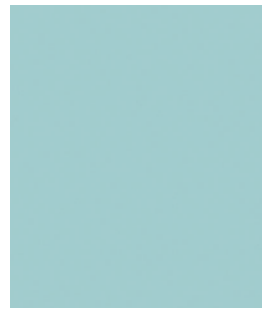
0392 Shell (SHL)
Powder Blue



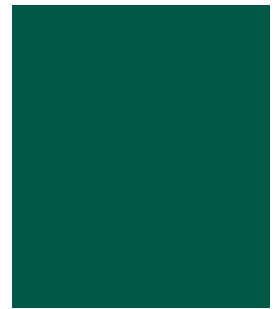
8183 Shell (SHL)
Royal Blue



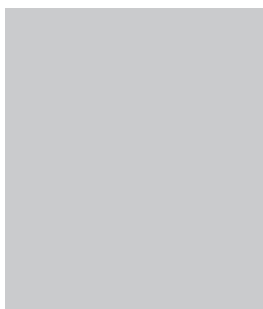
6469 Shell (SHL)
Sea Blue



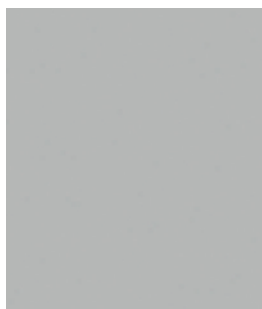
0573 Shell (SHL)
Sea Jade



6470 Shell (SHL)
Pine Green



6466 Shell (SHL)
Silk Grey



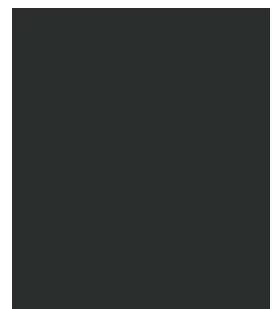
8180 Shell (SHL)
Quicksilver



8178 Shell (SHL)
Platinum



6632 Shell (SHL)
Pewter Grey



6467 Shell (SHL)
Granite Grey

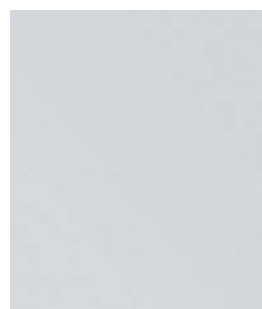


6468 Gloss (GLS)
Jet Black Gloss



6468 Shell (SHL)
Jet Black

Metals



4892 Matte (MTM)
Matte Aluminium



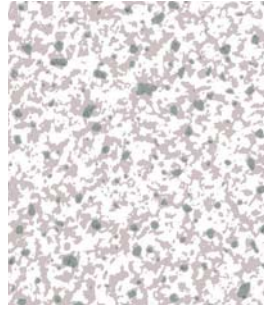
4896 Brushed (BRM)
Brushed Aluminium



6693 Shell (SHL)
Beige Canvas



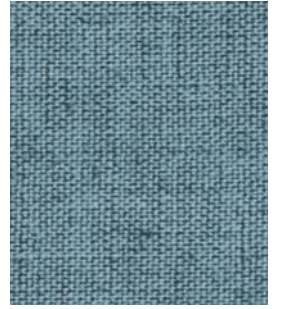
6691 Shell (SHL)
Grey Dots



0197 Shell (SHL)
Ailsa



6692 Shell (SHL)
Grey Canvas



6694 Shell (SHL)
Blue Canvas



0195 Shell (SHL)
Charcoal Splatter



0363 Shell (SHL)
Steel Swirl



6683 Shell (SHL)
Mountain Maple



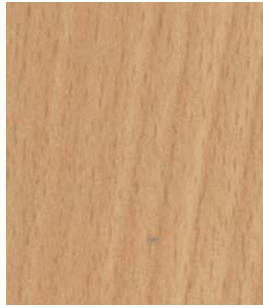
7617 Shell (SHL)
Sen Ash



6688 Shell (SHL)
Summer Oak



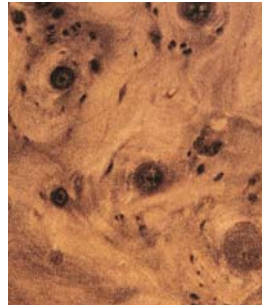
6687 Shell (SHL)
Wild Apple



6684 Shell (SHL)
Classic Beech



0447 Shell (SHL)
Durham Oak



0352 Gloss (GLS)
Burlled Amberwood



6686 Shell (SHL)
Sakura Cherry



8172 Shell (SHL)
Havana



6690 Shell (SHL)
Biella Walnut



6685 Shell (SHL)
Batu Wenge



6689 Shell (SHL)
Classic Redwood



4892 Corrugated (VCM)
Vertical Corrugated



4892 Corrugated (NCM)
Horizontal Corrugated



4892 Circles (CIM)
Circles



4892 Squares (SQM)
Squares



4892 Treadplate (FPM)
Treadplate

Product availability

Reference	Name	Surface Finish	Grade	Polycoated as standard	Sheet Size (mm)			
					2440 x 1220	3050 x 1220	3050 x 1300	3660 x 1525
0195	Charcoal Splatter	Shell	HGP	No	-	-	•	-
0197	Ailsa	Shell	HGP	No	-	-	•	-
0352	Burled Amberwood	Gloss	HGP	Yes	-	-	•	-
0363	Steel Swirl	Shell	HGP	No	-	-	•	-
0392	Powder Blue	Shell	HGP	No	-	-	•	-
0447	Durham Oak	Shell	HGP	No	-	-	•	•
0527	Buttermilk	Shell	HGP	No	-	-	•	-
0536	Muslin	Shell	HGP	No	-	-	•	-
0573	Sea Jade	Shell	HGP	No	-	-	•	-
2301	RN Grey	Shell	HGP	No	-	-	•	•
4892 CIM	Circles	Circles	MTS	Yes	-	•	-	-
4892 FPM	Treadplate	Treadplate	MTS	Yes	-	•	-	-
4892 MTM	Matte Aluminium	Matte	MTS	Yes	•	•	-	-
4892 NCM	Horizontal Corrugated	Corrugated	MTS	Yes	-	•	-	-
4892 SQM	Squares	Squares	MTS	Yes	-	•	-	-
4892 VCM	Vertical Corrugated	Corrugated	MTS	Yes	-	•	-	-
4896 BRM	Brushed Aluminium	Brushed	MTS	Yes	•	•	-	-
6463	Sheer White	Shell	HGP	No	-	-	•	-
6464	Signal White	Shell	HGP	No	-	-	•	•
6465	Cotton	Shell	HGP	No	-	-	•	-
6466	Silk Grey	Shell	HGP	No	-	-	•	•
6467	Granite Grey	Shell	HGP	Yes	-	-	•	-
6468	Jet Black	Shell	HGP	Yes	-	-	•	•
6468	Jet Black	Gloss	HGP	Yes	-	-	•	•
6469	Sea Blue	Shell	HGP	Yes	-	-	•	-
6470	Pine Green	Shell	HGP	Yes	-	-	•	-
6471	Sunny Yellow	Shell	HGP	No	-	-	•	-
6472	Rosso	Shell	HGP	No	-	-	•	•
6632	Pewter Grey	Shell	HGP	Yes	-	-	•	-
6683	Mountain Maple	Shell	HGP	No	-	-	•	-
6684	Classic Beech	Shell	HGP	No	-	-	•	•
6685	Batu Wenge	Shell	HGP	No	-	-	•	-
6686	Sakura Cherry	Shell	HGP	No	-	-	•	-
6687	Wild Apple	Shell	HGP	No	-	-	•	-
6688	Summer Oak	Shell	HGP	No	-	-	•	-
6689	Classic Redwood	Shell	HGP	No	-	-	•	-
6690	Biella Walnut	Shell	HGP	No	-	-	•	-
6691	Grey Dots	Shell	HGP	No	-	-	•	•
6692	Grey Canvas	Shell	HGP	No	-	-	•	•
6693	Beige Canvas	Shell	HGP	No	-	-	•	•
6694	Blue Canvas	Shell	HGP	No	-	-	•	•
7617	Sen Ash	Shell	HGP	No	-	-	•	-
8100	White	Shell	HGP	No	-	-	•	•
8100	White	Gloss	HGP	Yes	-	-	•	•
8172	Havana	Shell	HGP	Yes	-	-	•	-
8178	Platinum	Shell	HGP	No	-	-	•	-
8180	Quicksilver	Shell	HGP	No	-	-	•	-
8183	Royal Blue	Shell	HGP	Yes	-	-	•	-

HGP = Horizontal Grade Postforming MTS = Metallic Standard Grade Thin HPL (non postforming).

All Formica® laminates are manufactured in accordance with ISO 9001:2000 and EN 438:2005



Formica Limited reserves the right to change specification at any time without prior notice. The information contained in this brochure was correct at the time of publication but our policy is one of continuous product expansion and improvement and we expect to make changes in the future.

**For your sample please call 0191 259 3100
or email samples.uk@formica.com**

Coast Road - North Shields - Tyne and Wear - NE27 8RE
Tel: 0191 259 3100

www.formica.com

